

# Finding a Home Housing Search Plan

Casey and Emery are looking for housing. Together they make about \$18,000 a year. They're not sure if they qualify for subsidized housing. What choices do they have?

## Affordable Housing in Spokane WA

This chart shows Spokane's median income for 2017. To qualify for most rental assistance programs, a renter must earn no more than 50% of the Area Median Income (AMI). Use this chart to see if Casey and Emery are eligible for subsidized housing.

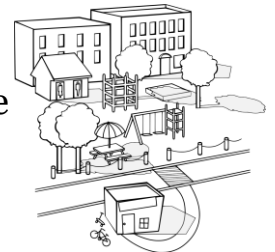
% of AMI	1 Person	2 Persons	3 Persons	4 Persons	5 Persons	6 Persons	7 Persons	8 Persons
30%	\$13,200	\$16,020	\$20,160	\$24,300	\$28,440	\$32,580	\$36,730	\$40,890
50%	\$21,950	\$25,050	\$28,200	\$31,300	\$33,850	\$36,350	\$38,850	\$41,350
80%	\$35,100	\$40,100	\$45,100	\$50,100	\$54,150	\$58,150	\$62,150	\$66,150



Casey and Emery probably qualify for most of the following housing choices. Which one would you choose?

### Referral Voucher

What is it? Several social service agencies receive vouchers and can use them to help their clients get subsidized housing. Rent is based on the income of the household.



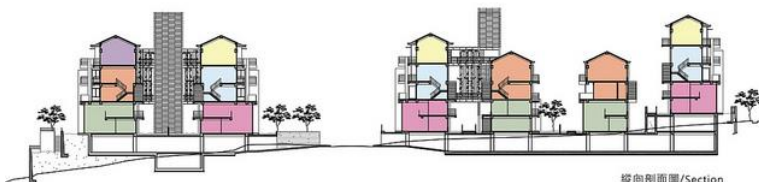
### Section 8 Housing Choice Voucher



What is it? This is a 'portable' voucher which can be used with any property that meets HUD Housing Quality Standards. Tenants find a landlord who will accept the voucher and after a housing inspection, they can sign a lease. After the initial 12-month lease, the tenant may be able move to another location and still use the voucher. Rent is based on the income of the household.

### Project Based Voucher

What is it? Some apartment buildings offer vouchers to their tenants. When the tenants move, they lose the voucher. Rent is based on the income of the household.



縱向剖面圖/Section

# Finding a Home Housing Search Plan

## Low Income Housing Tax Credit Apartments

Some apartment communities in Spokane receive tax credits for offering low-rent apartments. People with incomes at 60% or less of the Area Median Income (AMI) can possibly get a reduced rent apartment.

## HUD Subsidized Housing

What is it? HUD Housing includes several apartment complexes for people with low (50% AMI) or extremely low (30%AMI) incomes. Most of these are managed by *Kiemle & Hagood* or *Goodale & Barbieri*. Rent is based on the income of the household.



How do I find one of these places?

Here are several resources for finding affordable housing.



1. Call 2-1-1 They might be able to tell you if you're eligible. They can also tell you about agencies that offer housing assistance.
2. [https://affordablehousingonline.com/housing-search/Washington/ Spokane](https://affordablehousingonline.com/housing-search/Washington/Spokane) Go to this website and you can find a list of affordable housing in Spokane.
3. <http://housingsearchnw.org> This website lists places for rent in several areas of Washington. It's the most popular site for finding subsidized and affordable housing.
4. <http://www.khco.com/apartments> Kiemle & Hagood have many affordable apartments for seniors, families, and people with disabilities.
5. <http://g-b.com/apartments> Goodale & Barbieri have affordable housing for seniors, families, and people with mental illness.
6. <https://www.catholiccharitiesspokane.org/housing> Catholic Charities offers affordable housing with special services to seniors, families and people with disabilities.
7. <http://www.spokanehousingventures.org> Spokane Housing Ventures offers low income housing for seniors, families and people with disabilities.

